

Colectivo Ornitológico Cigüeña Negra (COCN.)

Estación Ornitológica de Tarifa

Crt. N 340 Km.78,5

Tarifa (Cádiz)

Tlf. 639.859.350

e-mail: cocn@tarifainfo.com

http: www.tarifainfo.com/cocn

Análisis de los datos de campo, contenidos en la Base de Datos del Colectivo Ornitológico Cigüeña Negra, obtenidos durante los siguientes días:

15/07/2005 a 31/07/2005

Condiciones climáticas:

<i>Fecha</i>	<i>Zona</i>	<i>Cielo Precipitaciones</i>		<i>Dir viento</i>	<i>Vel viento</i>	<i>Visibilidad</i>
16/07/2005	Obligo	NC	SP	100	8	6
17/07/2005	Pto de Bolonia	NI	SP	270	8	5
18/07/2005	Obligo	DE	SP	320		
18/07/2005	Pto de Bolonia	DE	SP	360		6
19/07/2005	Obligo	DE	SP	90	4	6
19/07/2005	Pto de Bolonia	DE	SP	290		7
20/07/2005	Obligo	DE	SP	90	16	6
20/07/2005	Pto de Bolonia	DE	SP	90	16	6
21/07/2005	Obligo	DE	SP	90		
21/07/2005	Pto de Bolonia	DE	SP		0	6
22/07/2005	Cazalla	TC	SP	270	8	3
22/07/2005	Obligo	PC	SP	280		4
22/07/2005	Pto de Bolonia	NC	SP	240	6	5
23/07/2005	Obligo	PC	SP	270	5	5
23/07/2005	Pto de Bolonia	TC	SP	220		4
23/07/2005	Tráfico	NC	SP	270	3	4
24/07/2005	Obligo	NC	SP	250	5	5
24/07/2005	Pto de Bolonia	TC	SP	270	10	4
24/07/2005	Tráfico	PN	SP	280		5
25/07/2005	Obligo	NC	SP	270	4	5
25/07/2005	Pto de Bolonia	NC	SP	270	10	6
26/07/2005	Obligo	TC	SP	280	5	5
26/07/2005	Pto de Bolonia	NI	SP	270	7	5
26/07/2005	Tejar	NC	SP	270	8	5
27/07/2005	Obligo	NC	SP	270	8	5
27/07/2005	Pto de Bolonia	PC	SP	270	5	4
27/07/2005	Tejar	NC	SP	270	6	5
28/07/2005	Obligo	TC	SP	270	5	6
28/07/2005	Pto de Bolonia	DE	SP	270	7	6
28/07/2005	Tejar	TC	SP	270	5	5
29/07/2005	Obligo	DE	SP	270	4	7
29/07/2005	Pto de Bolonia	PN	SP	220	4	6
29/07/2005	Tejar	DE	SP	270	6	5
30/07/2005	Obligo	DE	SP	270	4	6
30/07/2005	Pto de Bolonia	DE	SP			5
31/07/2005	Obligo	PN	SP	240		6
31/07/2005	Pto de Bolonia	PC	SP	270	7	5

Observadores:

<i>Fecha</i>	<i>CLAVE</i>	<i>Nombre</i>	<i>2º Nombre</i>	<i>Apellido</i>	<i>2ºApellido</i>	<i>H. inicio</i>	<i>H. final</i>
16/07/2005	GGM001	Gonzalo		Gil	Marques	9:47:00	12:30:00
16/07/2005	JEZIBL	Jezirah		Blanco	De la calle	7:45:00	15:10:00
16/07/2005	PACOPA	Paco - Fco	José	Montoya	Joya	7:47:00	15:10:00
16/07/2005	PIETRO	Pietro		D'amelio		7:45:00	15:10:00
16/07/2005	ROCEVA	Rocio		Evangelista	Tinoco	7:45:00	15:10:00
17/07/2005	ALINEG	Alicia		Rivero	Pedraza	8:36:00	15:25:00
17/07/2005	CLARIT	Clara		Patiño	Martínez	8:36:00	15:25:00
17/07/2005	CLR001	Carlos		Lozano	Robledo	12:30:00	15:25:00
17/07/2005	CHANGO	Leonor		Perez de la lastra	Sillero	8:36:00	15:25:00
17/07/2005	JEZIBL	Jezirah		Blanco	De la calle	7:47:00	15:25:00
17/07/2005	JRR001	Juan		Ramirez	Roman	12:30:00	15:25:00
17/07/2005	MLOBÓN	Manolo		Lobón	García	12:30:00	15:25:00
17/07/2005	PACOPA	Paco - Fco	José	Montoya	Joya	8:36:00	15:25:00
17/07/2005	ROCEVA	Rocio		Evangelista	Tinoco	7:47:00	15:25:00
18/07/2005	ALINEG	Alicia		Rivero	Pedraza	7:58:00	16:52:00
18/07/2005	CARLOS	Carlitos	Jose	Serrano	Núñez	7:38:00	16:30:00
18/07/2005	CLARIT	Clara		Patiño	Martínez	7:58:00	16:52:00
18/07/2005	CHANGO	Leonor		Perez de la lastra	Sillero	7:38:00	16:30:00
18/07/2005	JEZIBL	Jezirah		Blanco	De la calle	7:30:00	16:30:00
18/07/2005	MLOBÓN	Manolo		Lobón	García	12:00:00	16:52:00
18/07/2005	PACOPA	Paco - Fco	José	Montoya	Joya	7:58:00	16:52:00
18/07/2005	PIETRO	Pietro		D'amelio		7:38:00	16:30:00
18/07/2005	ROCEVA	Rocio		Evangelista	Tinoco	7:38:00	16:30:00
19/07/2005	CLR001	Carlos		Lozano	Robledo	7:47:00	15:30:00
19/07/2005	CHANGO	Leonor		Perez de la lastra	Sillero	7:40:00	15:50:00
19/07/2005	GGM001	Gonzalo		Gil	Marques	9:07:00	12:00:00
19/07/2005	JEZIBL	Jezirah		Blanco	De la calle	7:47:00	15:30:00
19/07/2005	PACOPA	Paco - Fco	José	Montoya	Joya	7:40:00	15:50:00
19/07/2005	ROCEVA	Rocio		Evangelista	Tinoco	7:47:00	15:30:00
20/07/2005	ALINEG	Alicia		Rivero	Pedraza	8:50:00	14:30:00
20/07/2005	CARLOS	Carlitos	Jose	Serrano	Núñez	8:50:00	14:30:00
20/07/2005	CHANGO	Leonor		Perez de la lastra	Sillero	8:50:00	14:30:00
20/07/2005	GGM001	Gonzalo		Gil	Marques	9:10:00	11:40:00
20/07/2005	JEZIBL	Jezirah		Blanco	De la calle	9:10:00	14:10:00
20/07/2005	KUNNAN	Pedro	Pablo	Requena	Moreno	8:50:00	14:30:00
20/07/2005	PACOPA	Paco - Fco	José	Montoya	Joya	8:20:00	14:10:00
20/07/2005	ROCEVA	Rocio		Evangelista	Tinoco	9:10:00	14:10:00
21/07/2005	ALINEG	Alicia		Rivero	Pedraza	7:50:00	16:41:00
21/07/2005	CARLOS	Carlitos	Jose	Serrano	Núñez	7:40:00	12:00:00
21/07/2005	CLARIT	Clara		Patiño	Martínez	7:40:00	19:00:00
21/07/2005	CHANGO	Leonor		Perez de la lastra	Sillero	7:50:00	16:41:00
21/07/2005	JEZIBL	Jezirah		Blanco	De la calle	7:40:00	19:00:00

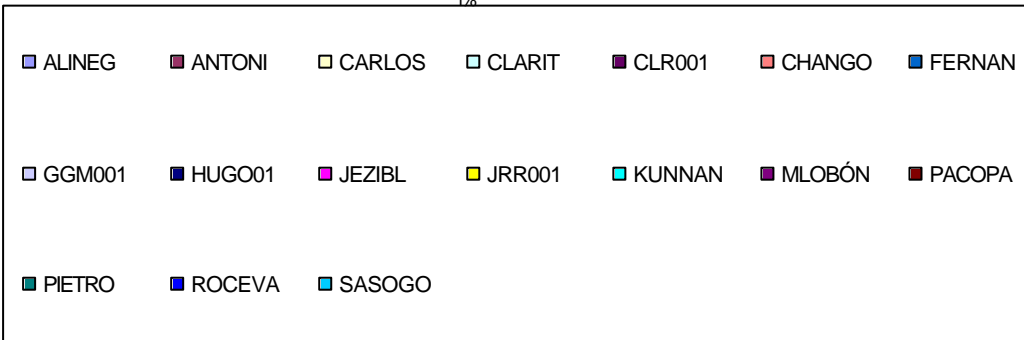
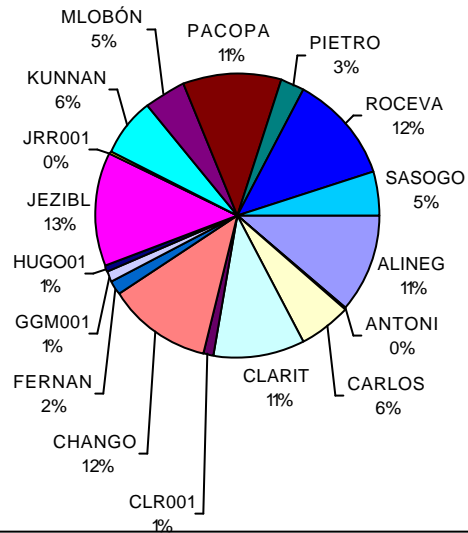
21/07/2005	KUNNAN	Pedro	Pablo	Requena	Moreno	11:30:00	19:00:00
21/07/2005	MLOBÓN	Manolo		Lobón	García	7:50:00	16:41:00
21/07/2005	PACOPA	Paco - Fco	José	Montoya	Joya	7:50:00	16:41:00
21/07/2005	ROCEVA	Rocio		Evangelista	Tinoco	7:40:00	19:00:00
22/07/2005	ALINEG	Alicia		Rivero	Pedraza	7:49:00	15:30:00
22/07/2005	CLARIT	Clara		Patiño	Martínez	7:49:00	15:30:00
22/07/2005	CHANGO	Leonor		Perez de la lastra	Sillero	8:20:00	15:30:00
22/07/2005	FERNAN	Fernando		Perez de Arenaza	Torroja	11:00:00	15:30:00
22/07/2005	JEZIBL	Jezirah		Blanco	De la calle	8:30:00	15:17:00
22/07/2005	KUNNAN	Pedro	Pablo	Requena	Moreno	7:49:00	15:30:00
22/07/2005	MLOBÓN	Manolo		Lobón	García	8:30:00	15:17:00
22/07/2005	PACOPA	Paco - Fco	José	Montoya	Joya	8:20:00	15:30:00
22/07/2005	ROCEVA	Rocio		Evangelista	Tinoco	8:30:00	15:17:00
23/07/2005	ALINEG	Alicia		Rivero	Pedraza	7:50:00	16:00:00
23/07/2005	ANTONI	Antonio		Aguilera	Nieves	8:30:00	12:00:00
23/07/2005	CLARIT	Clara		Patiño	Martínez	7:50:00	16:00:00
23/07/2005	CHANGO	Leonor		Perez de la lastra	Sillero	8:05:00	16:05:00
23/07/2005	FERNAN	Fernando		Perez de Arenaza	Torroja	10:51:00	16:00:00
23/07/2005	JEZIBL	Jezirah		Blanco	De la calle	7:41:00	16:00:00
23/07/2005	KUNNAN	Pedro	Pablo	Requena	Moreno	7:50:00	16:00:00
23/07/2005	MLOBÓN	Manolo		Lobón	García	8:05:00	16:05:00
23/07/2005	PACOPA	Paco - Fco	José	Montoya	Joya	7:41:00	16:00:00
23/07/2005	PIETRO	Pietro		D'amelio		13:40:00	16:00:00
23/07/2005	ROCEVA	Rocio		Evangelista	Tinoco	8:05:00	16:05:00
24/07/2005	ALINEG	Alicia		Rivero	Pedraza	8:30:00	17:00:00
24/07/2005	CLARIT	Clara		Patiño	Martínez	8:30:00	17:00:00
24/07/2005	CHANGO	Leonor		Perez de la lastra	Sillero	8:15:00	17:15:00
24/07/2005	JEZIBL	Jezirah		Blanco	De la calle	8:15:00	17:15:00
24/07/2005	KUNNAN	Pedro	Pablo	Requena	Moreno	8:15:00	17:15:00
24/07/2005	MLOBÓN	Manolo		Lobón	García	8:30:00	17:00:00
24/07/2005	PACOPA	Paco - Fco	José	Montoya	Joya	8:22:00	17:00:00
24/07/2005	PIETRO	Pietro		D'amelio		8:22:00	17:00:00
25/07/2005	ALINEG	Alicia		Rivero	Pedraza	7:40:00	15:50:00
25/07/2005	CLARIT	Clara		Patiño	Martínez	7:40:00	15:50:00
25/07/2005	CHANGO	Leonor		Perez de la lastra	Sillero	7:40:00	15:40:00
25/07/2005	FERNAN	Fernando		Perez de Arenaza	Torroja	14:00:00	15:50:00
25/07/2005	JEZIBL	Jezirah		Blanco	De la calle	8:00:00	10:40:00
25/07/2005	PACOPA	Paco - Fco	José	Montoya	Joya	8:00:00	10:40:00
25/07/2005	ROCEVA	Rocio		Evangelista	Tinoco	8:00:00	10:40:00
26/07/2005	ALINEG	Alicia		Rivero	Pedraza	7:50:00	11:00:00
26/07/2005	CARLOS	Carlitos	Jose	Serrano	Núñez	8:24:00	16:00:00
26/07/2005	CLARIT	Clara		Patiño	Martínez	7:50:00	11:00:00
26/07/2005	CHANGO	Leonor		Perez de la lastra	Sillero	7:50:00	11:00:00
26/07/2005	HUGO01	Hugo		Aguilar	Núñica	8:24:00	16:00:00
26/07/2005	JEZIBL	Jezirah		Blanco	De la calle	8:25:00	16:10:00
26/07/2005	PACOPA	Paco - Fco	José	Montoya	Joya	8:24:00	16:00:00

26/07/2005	ROCEVA	Rocio		Evangelista	Tinoco	8:25:00	16:10:00
26/07/2005	SASOGO	Salvador	Salvadorito	Solís	Gomez	8:25:00	16:10:00
27/07/2005	ALINEG	Alicia		Rivero	Pedraza	7:40:00	16:37:00
27/07/2005	CARLOS	Carlitos	Jose	Serrano	Núñez	7:40:00	16:37:00
27/07/2005	CLARIT	Clara		Patiño	Martínez	7:40:00	16:30:00
27/07/2005	CHANGO	Leonor		Perez de la lastra	Sillero	7:40:00	16:37:00
27/07/2005	FERNAN	Fernando		Perez de Arenaza	Torroja	14:30:00	16:16:00
27/07/2005	GGM001	Gonzalo		Gil	Marques	9:00:00	12:00:00
27/07/2005	JEZIBL	Jezirah		Blanco	De la calle	7:40:00	16:30:00
27/07/2005	KUNNAN	Pedro	Pablo	Requena	Moreno	7:55:00	16:16:00
27/07/2005	MLOBÓN	Manolo		Lobón	García	11:00:00	14:30:00
27/07/2005	PACOPA	Paco - Fco	José	Montoya	Joya	7:55:00	16:16:00
27/07/2005	ROCEVA	Rocio		Evangelista	Tinoco	7:40:00	16:30:00
27/07/2005	SASOGO	Salvador	Salvadorito	Solís	Gomez	7:40:00	16:30:00
28/07/2005	ALINEG	Alicia		Rivero	Pedraza	7:50:00	15:30:00
28/07/2005	CLARIT	Clara		Patiño	Martínez	7:50:00	15:30:00
28/07/2005	CHANGO	Leonor		Perez de la lastra	Sillero	7:50:00	15:30:00
28/07/2005	FERNAN	Fernando		Perez de Arenaza	Torroja	15:00:00	16:00:00
28/07/2005	JEZIBL	Jezirah		Blanco	De la calle	7:40:00	16:00:00
28/07/2005	KUNNAN	Pedro	Pablo	Requena	Moreno	8:14:00	16:00:00
28/07/2005	PACOPA	Paco - Fco	José	Montoya	Joya	8:14:00	16:00:00
28/07/2005	ROCEVA	Rocio		Evangelista	Tinoco	7:40:00	16:00:00
28/07/2005	SASOGO	Salvador	Salvadorito	Solís	Gomez	7:40:00	16:00:00
29/07/2005	ALINEG	Alicia		Rivero	Pedraza	7:40:00	15:30:00
29/07/2005	CARLOS	Carlitos	Jose	Serrano	Núñez	7:40:00	15:30:00
29/07/2005	CLARIT	Clara		Patiño	Martínez	7:40:00	15:30:00
29/07/2005	CHANGO	Leonor		Perez de la lastra	Sillero	7:40:00	15:30:00
29/07/2005	JEZIBL	Jezirah		Blanco	De la calle	7:42:00	17:30:00
29/07/2005	KUNNAN	Pedro	Pablo	Requena	Moreno	8:03:00	15:32:00
29/07/2005	PACOPA	Paco - Fco	José	Montoya	Joya	8:03:00	15:32:00
29/07/2005	ROCEVA	Rocio		Evangelista	Tinoco	7:42:00	17:30:00
29/07/2005	SASOGO	Salvador	Salvadorito	Solís	Gomez	7:42:00	17:30:00
30/07/2005	ALINEG	Alicia		Rivero	Pedraza	8:30:00	15:30:00
30/07/2005	CARLOS	Carlitos	Jose	Serrano	Núñez	8:40:00	15:00:00
30/07/2005	CLARIT	Clara		Patiño	Martínez	8:40:00	15:00:00
30/07/2005	CHANGO	Leonor		Perez de la lastra	Sillero	8:30:00	15:30:00
30/07/2005	JEZIBL	Jezirah		Blanco	De la calle	8:40:00	15:00:00
30/07/2005	ROCEVA	Rocio		Evangelista	Tinoco	8:30:00	15:30:00
30/07/2005	SASOGO	Salvador	Salvadorito	Solís	Gomez	8:30:00	15:30:00
31/07/2005	ALINEG	Alicia		Rivero	Pedraza	8:30:00	15:30:00
31/07/2005	CARLOS	Carlitos	Jose	Serrano	Núñez	8:30:00	15:30:00
31/07/2005	CLARIT	Clara		Patiño	Martínez	8:30:00	15:30:00
31/07/2005	CHANGO	Leonor		Perez de la lastra	Sillero	8:15:00	15:20:00
31/07/2005	JEZIBL	Jezirah		Blanco	De la calle	8:15:00	15:20:00
31/07/2005	MLOBÓN	Manolo		Lobón	García	8:30:00	12:30:00
31/07/2005	ROCEVA	Rocio		Evangelista	Tinoco	8:15:00	15:20:00

<i>CLAVE</i>	<i>MinutosDeObservación</i>	<i>HorasDeObservación</i>
ALINEG	6262	104,366666666667
ANTONI	210	3,5
CARLOS	3395	56,5833333333333
CLARIT	6024	100,4
CLR001	638	10,6333333333333
CHANGO	6734	112,233333333333
FERNAN	855	14,25
GGM001	666	11,1
HUGO01	456	7,6
JEZIBL	7380	123
JRR001	175	2,91666666666667
KUNNAN	3697	61,6166666666667
MLOBÓN	2845	47,4166666666667
PACOPA	6236	103,933333333333
PIETRO	1635	27,25
ROCEVA	6853	114,216666666667
SASOGO	2928	48,8

<i>TotalMinutosDeObservación</i>	<i>TotalHorasDeObservación</i>
56989	949,816666666667

Distribución del trabajo de campo



Observaciones de Aves Realizadas:

Fecha:	Hora:	UTM:	Especie:	Cantidad:
16/07/2005	8:56:00	30/260210/3993792/0020	Milvus migrans	1
16/07/2005	10:00:00	30/260210/3993792/0020	Ciconia ciconia	173
16/07/2005	10:00:00	30/260210/3993792/0020	Milvus migrans	3
16/07/2005	10:13:00	30/260210/3993792/0020	Hieraaetus pennatus	1
16/07/2005	10:16:00	30/260210/3993792/0020	Milvus migrans	1
16/07/2005	10:22:00	30/260210/3993792/0020	Ciconia ciconia	255
16/07/2005	10:34:00	30/260210/3993792/0020	Hieraaetus pennatus	1
16/07/2005	10:52:00	30/260210/3993792/0020	Ciconia ciconia	37
16/07/2005	11:22:00	30/260210/3993792/0020	Ciconia ciconia	450
16/07/2005	11:29:00	30/260210/3993792/0020	Ciconia ciconia	72
16/07/2005	11:56:00	30/260210/3993792/0020	Ciconia ciconia	550
16/07/2005	12:35:00	30/260210/3993792/0020	Ciconia ciconia	20
16/07/2005	12:35:00	30/260210/3993792/0020	Milvus migrans	2
16/07/2005	13:12:00	30/260210/3993792/0020	Ciconia ciconia	210
16/07/2005	13:43:00	30/260210/3993792/0020	Milvus migrans	2
16/07/2005	13:55:00	30/260210/3993792/0020	Ciconia ciconia	230
16/07/2005	14:01:00	30/260210/3993792/0020	Ciconia ciconia	250
16/07/2005	14:08:00	30/260210/3993792/0020	Ciconia ciconia	6
16/07/2005	14:10:00	30/260210/3993792/0020	Ciconia ciconia	60
16/07/2005	14:10:00	30/260210/3993792/0020	Ciconia ciconia	115
17/07/2005	9:25:00	30/254135/3998853/0250	Ciconia ciconia	275
17/07/2005	9:25:00	30/254135/3998853/0250	Ciconia ciconia	500
17/07/2005	9:25:00	30/254135/3998853/0250	Ciconia ciconia	700
17/07/2005	10:07:00	30/254135/3998853/0250	Ciconia ciconia	150
17/07/2005	10:20:00	30/254135/3998853/0250	Ciconia ciconia	80
17/07/2005	10:23:00	30/254135/3998853/0250	Ciconia ciconia	30
17/07/2005	10:25:00	30/254135/3998853/0250	Ciconia ciconia	3
17/07/2005	10:50:00	30/254135/3998853/0250	Ciconia ciconia	170
17/07/2005	11:21:00	30/254135/3998853/0250	Ciconia ciconia	50
17/07/2005	11:29:00	30/254135/3998853/0250	Ciconia ciconia	10
17/07/2005	11:29:00	30/254135/3998853/0250	Circaetus gallicus	1
17/07/2005	12:30:00	30/254135/3998853/0250	Ciconia ciconia	132
17/07/2005	12:30:00	30/254135/3998853/0250	Ciconia ciconia	190
17/07/2005	13:22:00	30/254135/3998853/0250	Ciconia ciconia	58
17/07/2005	13:37:00	30/254135/3998853/0250	Ciconia ciconia	3
17/07/2005	13:42:00	30/254135/3998853/0250	Ciconia ciconia	11
17/07/2005	13:42:00	30/254135/3998853/0250	Hieraaetus fasciatus	1
17/07/2005	13:42:00	30/254135/3998853/0250	Neophron percnopterus	1
17/07/2005	14:18:00	30/254135/3998853/0250	Ciconia ciconia	203
17/07/2005	14:20:00	30/254135/3998853/0250	Milvus migrans	3
17/07/2005	14:47:00	30/254135/3998853/0250	Ciconia ciconia	53
17/07/2005	14:56:00	30/254135/3998853/0250	circus pygargus	1
17/07/2005	15:19:00	30/254135/3998853/0250	Ciconia ciconia	13
18/07/2005	8:36:00	30/254135/3998853/0250	Neophron percnopterus	1
18/07/2005	8:55:00	30/254135/3998853/0250	Milvus migrans	12
18/07/2005	9:19:00	30/254135/3998853/0250	Ciconia ciconia	200
18/07/2005	9:20:00	30/254135/3998853/0250	Ciconia ciconia	6
18/07/2005	9:29:00	30/260210/3993792/0020	Ciconia ciconia	165
18/07/2005	9:35:00	30/260210/3993792/0020	Ciconia ciconia	6

18/07/2005	9:40:00	30/254135/3998853/0250	Ciconia ciconia	350
18/07/2005	9:55:00	30/254135/3998853/0250	Ciconia ciconia	10
18/07/2005	9:55:00	30/260210/3993792/0020	Ciconia ciconia	260
18/07/2005	9:55:00	30/260210/3993792/0020	Milvus migrans	2
18/07/2005	10:00:00	30/254135/3998853/0250	Ciconia ciconia	100
18/07/2005	10:10:00	30/254135/3998853/0250	Ciconia ciconia	50
18/07/2005	10:20:00	30/254135/3998853/0250	Ciconia ciconia	300
18/07/2005	10:25:00	30/260210/3993792/0020	Milvus migrans	6
18/07/2005	10:40:00	30/254135/3998853/0250	Ciconia ciconia	30
18/07/2005	10:40:00	30/260210/3993792/0020	Ciconia ciconia	250
18/07/2005	11:20:00	30/254135/3998853/0250	Ciconia ciconia	300
18/07/2005	11:30:00	30/254135/3998853/0250	Ciconia ciconia	1000
18/07/2005	11:45:00	30/260210/3993792/0020	Ciconia ciconia	919
18/07/2005	11:45:00	30/260210/3993792/0020	Milvus migrans	12
18/07/2005	12:05:00	30/254135/3998853/0250	Ciconia ciconia	200
18/07/2005	12:55:00	30/254135/3998853/0250	Ciconia ciconia	85
18/07/2005	13:00:00	30/260210/3993792/0020	Ciconia ciconia	78
18/07/2005	13:05:00	30/254135/3998853/0250	Ciconia ciconia	90
18/07/2005	13:07:00	30/254135/3998853/0250	Merops apiaster	
18/07/2005	13:59:00	30/254135/3998853/0250	Circus pygargus	1
18/07/2005	14:00:00	30/254135/3998853/0250	Milvus migrans	1
18/07/2005	14:00:00	30/254135/3998853/0250	Milvus migrans	12
18/07/2005	14:55:00	30/254135/3998853/0250	Ciconia ciconia	150
18/07/2005	15:00:00	30/254135/3998853/0250	Ciconia ciconia	83
18/07/2005	16:04:00	30/254135/3998853/0250	Ciconia ciconia	200
19/07/2005	7:47:00	30/254135/3998853/0250	Milvus migrans	1
19/07/2005	9:52:00	30/254135/3998853/0250	Milvus migrans	2
19/07/2005	10:08:00	30/260210/3993792/0020	Milvus migrans	1
19/07/2005	11:10:00	30/260210/3993792/0020	Circus pygargus	1
19/07/2005	11:10:00	30/260210/3993792/0020	Milvus migrans	2
19/07/2005	11:12:00	30/254135/3998853/0250	Milvus migrans	1
19/07/2005	13:12:00	30/254135/3998853/0250	Milvus migrans	2
19/07/2005	14:47:00	30/260210/3993792/0020	Milvus migrans	1
19/07/2005	15:45:00	30/260210/3993792/0020	Milvus migrans	12
20/07/2005	8:30:00	30/254135/3998853/0250	Milvus migrans	15
20/07/2005	8:58:00	30/260210/3993792/0020	Milvus migrans	19
20/07/2005	9:10:00	30/254135/3998853/0250	Circus pygargus	1
20/07/2005	9:45:00	30/260210/3993792/0020	Milvus migrans	4
20/07/2005	10:00:00	30/260210/3993792/0020	Milvus migrans	15
20/07/2005	11:30:00	30/260210/3993792/0020	Milvus migrans	7
20/07/2005	11:49:00	30/254135/3998853/0250	Milvus migrans	3
20/07/2005	13:45:00	30/260210/3993792/0020	Milvus migrans	3
21/07/2005	8:30:00	30/254135/3998853/0250	Milvus migrans	31
21/07/2005	8:30:00	30/254135/3998853/0250	Milvus migrans	89
21/07/2005	8:33:00	30/260210/3993792/0020	Milvus migrans	57
21/07/2005	8:35:00	30/260210/3993792/0020	Milvus migrans	62
21/07/2005	8:45:00	30/254135/3998853/0250	Milvus migrans	8
21/07/2005	8:50:00	30/260210/3993792/0020	Milvus migrans	49
21/07/2005	8:55:00	30/254135/3998853/0250	Circus pygargus	1
21/07/2005	8:55:00	30/260210/3993792/0020	Milvus migrans	48
21/07/2005	9:30:00	30/254135/3998853/0250	Ciconia ciconia	25
21/07/2005	9:30:00	30/254135/3998853/0250	Ciconia ciconia	400
21/07/2005	9:30:00	30/260210/3993792/0020	Ciconia ciconia	329
21/07/2005	9:30:00	30/260210/3993792/0020	Milvus migrans	11
21/07/2005	9:45:00	30/254135/3998853/0250	Ciconia ciconia	700

21/07/2005	9:50:00	30/254135/3998853/0250	Ciconia ciconia	90
21/07/2005	9:50:00	30/254135/3998853/0250	Ciconia ciconia	150
21/07/2005	9:53:00	30/260210/3993792/0020	Circaetus gallicus	1
21/07/2005	10:00:00	30/254135/3998853/0250	Milvus migrans	43
21/07/2005	10:00:00	30/260210/3993792/0020	Ciconia ciconia	82
21/07/2005	10:00:00	30/260210/3993792/0020	Ciconia ciconia	537
21/07/2005	10:04:00	30/260210/3993792/0020	Ciconia ciconia	150
21/07/2005	10:04:00	30/260210/3993792/0020	Milvus migrans	8
21/07/2005	10:10:00	30/254135/3998853/0250	Milvus migrans	32
21/07/2005	10:15:00	30/254135/3998853/0250	Ciconia ciconia	250
21/07/2005	10:15:00	30/254135/3998853/0250	Milvus migrans	12
21/07/2005	10:15:00	30/254135/3998853/0250	Milvus migrans	17
21/07/2005	10:24:00	30/260210/3993792/0020	Ciconia ciconia	207
21/07/2005	10:28:00	30/260210/3993792/0020	Ciconia ciconia	82
21/07/2005	10:30:00	30/254135/3998853/0250	Ciconia ciconia	11
21/07/2005	10:30:00	30/254135/3998853/0250	Milvus migrans	53
21/07/2005	10:30:00	30/260210/3993792/0020	Milvus migrans	46
21/07/2005	10:40:00	30/254135/3998853/0250	Ciconia ciconia	1000
21/07/2005	10:45:00	30/254135/3998853/0250	Ciconia ciconia	220
21/07/2005	10:45:00	30/254135/3998853/0250	Milvus migrans	21
21/07/2005	10:46:00	30/260210/3993792/0020	Ciconia ciconia	1500
21/07/2005	10:46:00	30/260210/3993792/0020	Milvus migrans	42
21/07/2005	10:49:00	30/260210/3993792/0020	Ciconia ciconia	84
21/07/2005	10:50:00	30/254135/3998853/0250	Milvus migrans	50
21/07/2005	10:53:00	30/260210/3993792/0020	Ciconia ciconia	120
21/07/2005	10:55:00	30/254135/3998853/0250	Ciconia ciconia	242
21/07/2005	11:00:00	30/254135/3998853/0250	Ciconia ciconia	604
21/07/2005	11:03:00	30/260210/3993792/0020	Ciconia ciconia	183
21/07/2005	11:03:00	30/260210/3993792/0020	Milvus migrans	107
21/07/2005	11:10:00	30/254135/3998853/0250	Ciconia ciconia	140
21/07/2005	11:10:00	30/254135/3998853/0250	Milvus migrans	30
21/07/2005	11:14:00	30/260210/3993792/0020	Ciconia ciconia	520
21/07/2005	11:20:00	30/254135/3998853/0250	Ciconia ciconia	81
21/07/2005	11:25:00	30/254135/3998853/0250	Ciconia ciconia	800
21/07/2005	11:30:00	30/254135/3998853/0250	Ciconia ciconia	400
21/07/2005	11:31:00	30/260210/3993792/0020	Ciconia ciconia	621
21/07/2005	11:35:00	30/254135/3998853/0250	Ciconia ciconia	63
21/07/2005	11:40:00	30/254135/3998853/0250	Ciconia ciconia	270
21/07/2005	11:45:00	30/254135/3998853/0250	Ciconia ciconia	300
21/07/2005	11:53:00	30/260210/3993792/0020	Ciconia ciconia	500
21/07/2005	12:03:00	30/260210/3993792/0020	Milvus migrans	5
21/07/2005	12:15:00	30/260210/3993792/0020	Ciconia ciconia	600
21/07/2005	12:15:00	30/260210/3993792/0020	Milvus migrans	5
21/07/2005	12:16:00	30/254135/3998853/0250	Ciconia ciconia	600
21/07/2005	12:20:00	30/254135/3998853/0250	Ciconia ciconia	600
21/07/2005	12:33:00	30/254135/3998853/0250	Milvus migrans	14
21/07/2005	12:35:00	30/254135/3998853/0250	Ciconia ciconia	104
21/07/2005	12:38:00	30/260210/3993792/0020	Ciconia ciconia	1200
21/07/2005	12:39:00	30/254135/3998853/0250	Ciconia ciconia	600
21/07/2005	12:40:00	30/260210/3993792/0020	Milvus migrans	22
21/07/2005	12:50:00	30/260210/3993792/0020	Ciconia ciconia	171
21/07/2005	13:00:00	30/254135/3998853/0250	Ciconia ciconia	80
21/07/2005	13:00:00	30/254135/3998853/0250	Milvus migrans	19
21/07/2005	13:15:00	30/260210/3993792/0020	Ciconia ciconia	80
21/07/2005	13:41:00	30/254135/3998853/0250	Ciconia ciconia	112

21/07/2005	13:52:00	30/254135/3998853/0250	Hieraaetus pennatus	1
21/07/2005	14:04:00	30/254135/3998853/0250	Ciconia ciconia	542
21/07/2005	14:16:00	30/260210/3993792/0020	Ciconia ciconia	500
21/07/2005	14:20:00	30/254135/3998853/0250	Ciconia ciconia	67
21/07/2005	14:23:00	30/260210/3993792/0020	Ciconia ciconia	190
21/07/2005	14:48:00	30/254135/3998853/0250	Ciconia ciconia	83
21/07/2005	14:51:00	30/260210/3993792/0020	Circaetus gallicus	1
21/07/2005	15:50:00	30/254135/3998853/0250	Ciconia ciconia	400
21/07/2005	16:34:00	30/260210/3993792/0020	Ciconia ciconia	400
22/07/2005	8:30:00	30/270300/3993435/0200	Milvus migrans	103
22/07/2005	8:37:00	30/270300/3993435/0200	Milvus migrans	3
22/07/2005	8:46:00	30/254135/3998853/0250	Ciconia ciconia	1000
22/07/2005	8:55:00	30/270300/3993435/0200	Falco tinnunculus	1
22/07/2005	8:55:00	30/270300/3993435/0200	Hieraaetus pennatus	1
22/07/2005	9:00:00	30/260210/3993792/0020	Ciconia ciconia	80
22/07/2005	9:00:00	30/260210/3993792/0020	Ciconia ciconia	400
22/07/2005	9:10:00	30/270300/3993435/0200	Ciconia ciconia	1200
22/07/2005	9:12:00	30/254135/3998853/0250	Ciconia ciconia	50
22/07/2005	9:20:00	30/254135/3998853/0250	Ciconia ciconia	50
22/07/2005	9:20:00	30/260210/3993792/0020	Ciconia ciconia	50
22/07/2005	9:25:00	30/254135/3998853/0250	Ciconia ciconia	700
22/07/2005	9:25:00	30/260210/3993792/0020	Milvus migrans	74
22/07/2005	9:35:00	30/260210/3993792/0020	Ciconia ciconia	500
22/07/2005	9:45:00	30/254135/3998853/0250	Ciconia ciconia	3
22/07/2005	10:00:00	30/254135/3998853/0250	Ciconia ciconia	500
22/07/2005	10:05:00	30/254135/3998853/0250	Ciconia ciconia	10
22/07/2005	10:07:00	30/254135/3998853/0250	Ciconia ciconia	15
22/07/2005	10:10:00	30/260210/3993792/0020	Ciconia ciconia	500
22/07/2005	10:11:00	30/260210/3993792/0020	Milvus migrans	1
22/07/2005	10:15:00	30/254135/3998853/0250	Ciconia ciconia	500
22/07/2005	10:21:00	30/254135/3998853/0250	Ciconia ciconia	500
22/07/2005	10:25:00	30/254135/3998853/0250	Ciconia ciconia	500
22/07/2005	10:45:00	30/270300/3993435/0200	Ciconia ciconia	1500
22/07/2005	11:10:00	30/260210/3993792/0020	Neophron percnopterus	1
22/07/2005	11:10:00	30/270300/3993435/0200	Ciconia ciconia	500
22/07/2005	11:15:00	30/260210/3993792/0020	Ciconia ciconia	650
22/07/2005	11:23:00	30/270300/3993435/0200	Ciconia ciconia	800
22/07/2005	11:54:00	30/254135/3998853/0250	Ciconia ciconia	100
22/07/2005	12:00:00	30/260210/3993792/0020	Ciconia ciconia	1000
22/07/2005	12:07:00	30/254135/3998853/0250	Ciconia ciconia	200
22/07/2005	13:20:00	30/260210/3993792/0020	Milvus migrans	7
22/07/2005	13:30:00	30/254135/3998853/0250	Circaetus gallicus	1
22/07/2005	13:30:00	30/260210/3993792/0020	Milvus migrans	15
22/07/2005	13:40:00	30/254135/3998853/0250	Ciconia ciconia	100
22/07/2005	13:55:00	30/260210/3993792/0020	Milvus migrans	34
22/07/2005	14:00:00	30/254135/3998853/0250	Milvus migrans	50
22/07/2005	14:07:00	30/254135/3998853/0250	Milvus migrans	62
22/07/2005	14:30:00	30/270300/3993435/0200	Ciconia ciconia	25
23/07/2005	8:15:00	30/254135/3998853/0250	Buteo buteo	3
23/07/2005	8:27:00	30/266840/3989372/0125	Milvus migrans	5
23/07/2005	8:30:00	30/266840/3989372/0125	Milvus migrans	16
23/07/2005	8:40:00	30/260210/3993792/0020	Milvus migrans	1
23/07/2005	8:43:00	30/266840/3989372/0125	Milvus migrans	40
23/07/2005	8:45:00	30/266840/3989372/0125	Milvus migrans	18
23/07/2005	8:47:00	30/266840/3989372/0125	Hieraaetus fasciatus	1

23/07/2005	8:50:00	30/254135/3998853/0250	Circus pygargus	2
23/07/2005	9:10:00	30/254135/3998853/0250	Circaetus gallicus	2
23/07/2005	9:10:00	30/266840/3989372/0125	Milvus migrans	15
23/07/2005	9:23:00	30/266840/3989372/0125	Hieraaetus pennatus	2
23/07/2005	9:30:00	30/266840/3989372/0125	Circus pygargus	1
23/07/2005	9:30:00	30/266840/3989372/0125	Hieraaetus pennatus	3
23/07/2005	9:35:00	30/266840/3989372/0125	Circaetus gallicus	1
23/07/2005	9:45:00	30/254135/3998853/0250	Circaetus gallicus	1
23/07/2005	9:55:00	30/260210/3993792/0020	Ciconia ciconia	500
23/07/2005	10:00:00	30/254135/3998853/0250	Milvus migrans	30
23/07/2005	10:05:00	30/266840/3989372/0125	Milvus migrans	65
23/07/2005	10:10:00	30/254135/3998853/0250	Ciconia ciconia	50
23/07/2005	10:10:00	30/266840/3989372/0125	Ciconia ciconia	250
23/07/2005	10:20:00	30/254135/3998853/0250	Ciconia ciconia	40
23/07/2005	10:20:00	30/254135/3998853/0250	Ciconia ciconia	300
23/07/2005	10:22:00	30/266840/3989372/0125	Ciconia ciconia	210
23/07/2005	10:25:00	30/260210/3993792/0020	Ciconia ciconia	300
23/07/2005	10:30:00	30/254135/3998853/0250	Ciconia ciconia	60
23/07/2005	10:40:00	30/260210/3993792/0020	Circaetus gallicus	3
23/07/2005	10:41:00	30/260210/3993792/0020	Ciconia ciconia	62
23/07/2005	10:43:00	30/266840/3989372/0125	Ciconia ciconia	240
23/07/2005	10:50:00	30/254135/3998853/0250	Circaetus gallicus	2
23/07/2005	10:50:00	30/260210/3993792/0020	Ciconia ciconia	165
23/07/2005	10:54:00	30/266840/3989372/0125	Ciconia ciconia	80
23/07/2005	11:02:00	30/260210/3993792/0020	Milvus migrans	2
23/07/2005	11:03:00	30/266840/3989372/0125	Ciconia ciconia	150
23/07/2005	11:04:00	30/260210/3993792/0020	Ciconia ciconia	53
23/07/2005	11:26:00	30/266840/3989372/0125	Ciconia ciconia	60
23/07/2005	11:50:00	30/254135/3998853/0250	Ciconia ciconia	70
23/07/2005	11:58:00	30/260210/3993792/0020	Ciconia ciconia	122
23/07/2005	12:00:00	30/254135/3998853/0250	Milvus migrans	15
23/07/2005	12:10:00	30/266840/3989372/0125	Ciconia ciconia	120
23/07/2005	12:45:00	30/254135/3998853/0250	Ciconia ciconia	80
23/07/2005	13:23:00	30/254135/3998853/0250	Ciconia ciconia	60
23/07/2005	14:09:00	30/260210/3993792/0020	Elanus caeruleus	1
23/07/2005	14:10:00	30/254135/3998853/0250	Milvus migrans	50
23/07/2005	14:15:00	30/254135/3998853/0250	Milvus migrans	63
23/07/2005	14:21:00	30/254135/3998853/0250	Ciconia ciconia	142
23/07/2005	14:30:00	30/260210/3993792/0020	Ciconia ciconia	150
23/07/2005	15:05:00	30/266840/3989372/0125	Ciconia ciconia	110
24/07/2005	8:40:00	30/266840/3989372/0125	Milvus migrans	34
24/07/2005	8:45:00	30/266840/3989372/0125	Circaetus gallicus	1
24/07/2005	8:50:00	30/266840/3989372/0125	Milvus migrans	18
24/07/2005	9:00:00	30/266840/3989372/0125	Falco peregrinus	1
24/07/2005	9:05:00	30/266840/3989372/0125	Circus pygargus	1
24/07/2005	9:15:00	30/266840/3989372/0125	Milvus migrans	16
24/07/2005	9:20:00	30/266840/3989372/0125	Hieraaetus pennatus	1
24/07/2005	9:30:00	30/266840/3989372/0125	Milvus migrans	2
24/07/2005	9:40:00	30/266840/3989372/0125	Hieraaetus pennatus	1
24/07/2005	9:40:00	30/266840/3989372/0125	Milvus migrans	11
24/07/2005	9:55:00	30/266840/3989372/0125	Circaetus gallicus	4
24/07/2005	9:55:00	30/266840/3989372/0125	Hieraaetus pennatus	2
24/07/2005	9:55:00	30/266840/3989372/0125	Milvus migrans	7
24/07/2005	10:03:00	30/254135/3998853/0250	Milvus migrans	15

24/07/2005	10:10:00	30/266840/3989372/0125	Hieraaetus pennatus	3
24/07/2005	10:10:00	30/266840/3989372/0125	Milvus migrans	31
24/07/2005	10:18:00	30/254135/3998853/0250	Milvus migrans	6
24/07/2005	10:20:00	30/266840/3989372/0125	Circus pygargus	2
24/07/2005	10:30:00	30/254135/3998853/0250	Ciconia ciconia	200
24/07/2005	10:30:00	30/254135/3998853/0250	Ciconia ciconia	300
24/07/2005	10:35:00	30/254135/3998853/0250	Ciconia ciconia	150
24/07/2005	10:40:00	30/254135/3998853/0250	Ciconia ciconia	4000
24/07/2005	10:50:00	30/254135/3998853/0250	Ciconia ciconia	10
24/07/2005	10:50:00	30/254135/3998853/0250	Ciconia ciconia	25
24/07/2005	10:54:00	30/254135/3998853/0250	Milvus migrans	1
24/07/2005	10:57:00	30/254135/3998853/0250	Ciconia ciconia	25
24/07/2005	10:57:00	30/254135/3998853/0250	Circaetus gallicus	1
24/07/2005	10:58:00	30/254135/3998853/0250	Ciconia ciconia	40
24/07/2005	10:58:00	30/254135/3998853/0250	Ciconia ciconia	100
24/07/2005	11:00:00	30/260210/3993792/0020	Ciconia ciconia	300
24/07/2005	11:00:00	30/266840/3989372/0125	Ciconia ciconia	450
24/07/2005	11:02:00	30/260210/3993792/0020	Ciconia ciconia	100
24/07/2005	11:03:00	30/266840/3989372/0125	Ciconia ciconia	205
24/07/2005	11:04:00	30/260210/3993792/0020	Ciconia ciconia	17
24/07/2005	11:04:00	30/260210/3993792/0020	Ciconia ciconia	25
24/07/2005	11:10:00	30/260210/3993792/0020	Ciconia ciconia	23
24/07/2005	11:10:00	30/260210/3993792/0020	Milvus migrans	1
24/07/2005	11:14:00	30/266840/3989372/0125	Ciconia ciconia	25
24/07/2005	11:15:00	30/260210/3993792/0020	Ciconia ciconia	125
24/07/2005	11:17:00	30/260210/3993792/0020	Ciconia ciconia	25
24/07/2005	11:20:00	30/266840/3989372/0125	Ciconia ciconia	140
24/07/2005	11:22:00	30/260210/3993792/0020	Milvus migrans	3
24/07/2005	11:22:00	30/266840/3989372/0125	Ciconia ciconia	40
24/07/2005	11:35:00	30/260210/3993792/0020	Ciconia ciconia	20
24/07/2005	11:36:00	30/266840/3989372/0125	Ciconia ciconia	1
24/07/2005	11:39:00	30/254135/3998853/0250	Ciconia ciconia	12
24/07/2005	11:40:00	30/266840/3989372/0125	Milvus migrans	8
24/07/2005	11:54:00	30/254135/3998853/0250	Milvus migrans	4
24/07/2005	11:55:00	30/266840/3989372/0125	Ciconia ciconia	16
24/07/2005	12:01:00	30/254135/3998853/0250	Ciconia ciconia	150
24/07/2005	12:06:00	30/260210/3993792/0020	Milvus migrans	16
24/07/2005	12:16:00	30/266840/3989372/0125	Milvus migrans	16
24/07/2005	12:20:00	30/266840/3989372/0125	Ciconia ciconia	120
24/07/2005	12:20:00	30/266840/3989372/0125	Circus aeruginosus	1
24/07/2005	13:02:00	30/254135/3998853/0250	Ciconia ciconia	150
24/07/2005	13:05:00	30/254135/3998853/0250	Ciconia ciconia	300
24/07/2005	13:08:00	30/254135/3998853/0250	Ciconia ciconia	350
24/07/2005	13:15:00	30/260210/3993792/0020	Ciconia ciconia	450
24/07/2005	13:15:00	30/260210/3993792/0020	Milvus migrans	17
24/07/2005	13:30:00	30/266840/3989372/0125	Milvus migrans	27
24/07/2005	13:40:00	30/266840/3989372/0125	Ciconia ciconia	550
24/07/2005	13:50:00	30/266840/3989372/0125	Ciconia ciconia	50
24/07/2005	15:03:00	30/254135/3998853/0250	Ciconia ciconia	900
24/07/2005	15:13:00	30/260210/3993792/0020	Ciconia ciconia	100
24/07/2005	15:23:00	30/254135/3998853/0250	Ciconia ciconia	100
24/07/2005	15:26:00	30/254135/3998853/0250	Ciconia ciconia	400
24/07/2005	15:28:00	30/254135/3998853/0250	Ciconia ciconia	200
24/07/2005	15:37:00	30/254135/3998853/0250	Ciconia ciconia	50

24/07/2005	15:38:00	30/260210/3993792/0020	Ciconia ciconia	600
24/07/2005	15:40:00	30/266840/3989372/0125	Ciconia ciconia	100
24/07/2005	15:45:00	30/254135/3998853/0250	Ciconia ciconia	14
24/07/2005	15:45:00	30/266840/3989372/0125	Ciconia ciconia	600
24/07/2005	15:47:00	30/254135/3998853/0250	Ciconia ciconia	40
24/07/2005	15:52:00	30/260210/3993792/0020	Ciconia ciconia	150
24/07/2005	16:20:00	30/254135/3998853/0250	Gyps rueppellii	1
24/07/2005	16:54:00	30/254135/3998853/0250	Ciconia ciconia	198
25/07/2005	8:00:00	30/254135/3998853/0250	Merops apiaster	15
25/07/2005	8:20:00	30/260210/3993792/0020	Circaetus gallicus	3
25/07/2005	8:31:00	30/254135/3998853/0250	Ciconia ciconia	400
25/07/2005	9:12:00	30/254135/3998853/0250	Ciconia ciconia	600
25/07/2005	9:15:00	30/260210/3993792/0020	Ciconia ciconia	600
25/07/2005	9:24:00	30/254135/3998853/0250	Ciconia ciconia	50
25/07/2005	9:40:00	30/260210/3993792/0020	Ciconia ciconia	70
25/07/2005	10:15:00	30/254135/3998853/0250	Ciconia ciconia	200
25/07/2005	10:20:00	30/254135/3998853/0250	Ciconia ciconia	300
25/07/2005	10:25:00	30/254135/3998853/0250	Ciconia ciconia	100
25/07/2005	10:30:00	30/260210/3993792/0020	Ciconia ciconia	130
25/07/2005	11:00:00	30/260210/3993792/0020	Psittacula krameri	1
25/07/2005	11:05:00	30/260210/3993792/0020	Ciconia ciconia	600
25/07/2005	13:50:00	30/260210/3993792/0020	Ciconia ciconia	850
25/07/2005	15:00:00	30/260210/3993792/0020	Ciconia ciconia	1000
26/07/2005	8:35:00	30/254135/3998853/0250	Circus pygargus	1
26/07/2005	8:45:00	30/260210/3993792/0020	Hieraaetus pennatus	1
26/07/2005	9:00:00	30/254135/3998853/0250	Circaetus gallicus	3
26/07/2005	9:05:00	30/254135/3998853/0250	Milvus migrans	6
26/07/2005	9:05:00	30/254135/3998853/0250	Milvus migrans	14
26/07/2005	9:15:00	30/254135/3998853/0250	Ciconia ciconia	100
26/07/2005	9:15:00	30/260210/3993792/0020	Hieraaetus pennatus	1
26/07/2005	9:20:00	30/260210/3993792/0020	Ciconia ciconia	2000
26/07/2005	9:25:00	30/254135/3998853/0250	hieraaetus penatus	1
26/07/2005	9:40:00	30/265386/3989809/0100	Ciconia ciconia	35
26/07/2005	9:40:00	30/265386/3989809/0100	Ciconia ciconia	2000
26/07/2005	9:52:00	30/254135/3998853/0250	Ciconia ciconia	21
26/07/2005	9:53:00	30/254135/3998853/0250	Ciconia ciconia	500
26/07/2005	10:07:00	30/254135/3998853/0250	Ciconia ciconia	300
26/07/2005	10:10:00	30/260210/3993792/0020	Milvus migrans	21
26/07/2005	10:15:00	30/254135/3998853/0250	Neophron percnopterus	1
26/07/2005	10:16:00	30/265386/3989809/0100	Ciconia ciconia	101
26/07/2005	10:16:00	30/265386/3989809/0100	Ciconia ciconia	450
26/07/2005	10:20:00	30/260210/3993792/0020	Ciconia ciconia	280
26/07/2005	10:21:00	30/254135/3998853/0250	Ciconia ciconia	80
26/07/2005	10:29:00	30/254135/3998853/0250	Circus pygargus	1
26/07/2005	10:30:00	30/254135/3998853/0250	Ciconia ciconia	40
26/07/2005	10:30:00	30/260210/3993792/0020	Ciconia ciconia	98
26/07/2005	10:30:00	30/265386/3989809/0100	Ciconia ciconia	-38
26/07/2005	10:30:00	30/265386/3989809/0100	Ciconia ciconia	27
26/07/2005	10:31:00	30/254135/3998853/0250	Ciconia ciconia	300
26/07/2005	10:35:00	30/254135/3998853/0250	Ciconia ciconia	80
26/07/2005	10:40:00	30/254135/3998853/0250	Ciconia ciconia	90
26/07/2005	10:45:00	30/260210/3993792/0020	Ciconia ciconia	90
26/07/2005	10:50:00	30/260210/3993792/0020	Ciconia ciconia	100

26/07/2005	10:58:00	30/254135/3998853/0250	Circus pygargus	1
26/07/2005	11:00:00	30/265386/3989809/0100	Ciconia ciconia	90
26/07/2005	11:00:00	30/265386/3989809/0100	Ciconia ciconia	200
26/07/2005	11:07:00	30/265386/3989809/0100	Ciconia ciconia	107
26/07/2005	11:15:00	30/254135/3998853/0250	Ciconia ciconia	40
26/07/2005	11:19:00	30/254135/3998853/0250	Ciconia ciconia	60
26/07/2005	11:19:00	30/254135/3998853/0250	Circaetus gallicus	2
26/07/2005	11:30:00	30/254135/3998853/0250	Circaetus gallicus	1
26/07/2005	11:34:00	30/254135/3998853/0250	Ciconia ciconia	15
26/07/2005	11:35:00	30/254135/3998853/0250	Milvus migrans	12
26/07/2005	11:38:00	30/254135/3998853/0250	Ciconia ciconia	200
26/07/2005	11:43:00	30/254135/3998853/0250	Ciconia ciconia	30
26/07/2005	11:46:00	30/254135/3998853/0250	Circaetus gallicus	2
26/07/2005	11:47:00	30/254135/3998853/0250	Ciconia ciconia	2
26/07/2005	11:52:00	30/254135/3998853/0250	Ciconia ciconia	100
26/07/2005	11:53:00	30/254135/3998853/0250	Neophron percnopterus	2
26/07/2005	11:53:00	30/265386/3989809/0100	Ciconia ciconia	200
26/07/2005	12:00:00	30/254135/3998853/0250	Ciconia ciconia	87
26/07/2005	12:00:00	30/265386/3989809/0100	Ciconia ciconia	103
26/07/2005	12:00:00	30/265386/3989809/0100	Circus pygargus	1
26/07/2005	12:07:00	30/254135/3998853/0250	Milvus migrans	1
26/07/2005	12:12:00	30/254135/3998853/0250	Ciconia ciconia	200
26/07/2005	13:14:00	30/254135/3998853/0250	Ciconia ciconia	100
26/07/2005	13:18:00	30/254135/3998853/0250	Ciconia ciconia	600
26/07/2005	13:18:00	30/254135/3998853/0250	Milvus migrans	60
26/07/2005	13:26:00	30/254135/3998853/0250	Circus pygargus	1
26/07/2005	13:35:00	30/254135/3998853/0250	Ciconia ciconia	43
26/07/2005	13:36:00	30/265386/3989809/0100	Ciconia ciconia	300
26/07/2005	13:37:00	30/254135/3998853/0250	Ciconia ciconia	100
26/07/2005	13:37:00	30/254135/3998853/0250	Milvus migrans	38
26/07/2005	13:37:00	30/254135/3998853/0250	Pandion haliaetus	1
26/07/2005	13:40:00	30/254135/3998853/0250	Circus pygargus	1
26/07/2005	13:50:00	30/254135/3998853/0250	Circaetus gallicus	2
26/07/2005	13:51:00	30/254135/3998853/0250	Ciconia ciconia	198
26/07/2005	13:51:00	30/254135/3998853/0250	Milvus migrans	5
26/07/2005	14:00:00	30/254135/3998853/0250	Milvus migrans	10
26/07/2005	14:04:00	30/265386/3989809/0100	Ciconia ciconia	500
26/07/2005	14:19:00	30/254135/3998853/0250	Ciconia ciconia	50
26/07/2005	14:19:00	30/254135/3998853/0250	Circus pygargus	1
26/07/2005	14:19:00	30/254135/3998853/0250	Milvus migrans	
26/07/2005	15:00:00	30/254135/3998853/0250	Ciconia ciconia	650
27/07/2005	8:30:00	30/265386/3989809/0100	Merops apiaster	14
27/07/2005	8:45:00	30/254135/3998853/0250	Ciconia ciconia	450
27/07/2005	8:55:00	30/260210/3993792/0020	Ciconia ciconia	450
27/07/2005	9:11:00	30/260210/3993792/0020	Ciconia ciconia	450
27/07/2005	9:16:00	30/265386/3989809/0100	Ciconia ciconia	70
27/07/2005	9:21:00	30/265386/3989809/0100	Ciconia ciconia	450
27/07/2005	9:21:00	30/265386/3989809/0100	Hieraaetus pennatus	1
27/07/2005	9:35:00	30/260210/3993792/0020	Milvus migrans	1
27/07/2005	9:40:00	30/254135/3998853/0250	Ciconia ciconia	70
27/07/2005	9:52:00	30/260210/3993792/0020	Ciconia ciconia	59
27/07/2005	10:00:00	30/265386/3989809/0100	Ciconia ciconia	65

27/07/2005	10:07:00	30/260210/3993792/0020	Ciconia ciconia	21
27/07/2005	10:07:00	30/260210/3993792/0020	Milvus migrans	7
27/07/2005	10:10:00	30/254135/3998853/0250	Ciconia ciconia	170
27/07/2005	10:15:00	30/265386/3989809/0100	Ciconia ciconia	20
27/07/2005	10:16:00	30/260210/3993792/0020	Circaetus gallicus	2
27/07/2005	10:16:00	30/260210/3993792/0020	Milvus migrans	1
27/07/2005	10:19:00	30/260210/3993792/0020	Ciconia ciconia	200
27/07/2005	10:20:00	30/265386/3989809/0100	Ciconia ciconia	20
27/07/2005	10:28:00	30/265386/3989809/0100	Ciconia ciconia	216
27/07/2005	10:32:00	30/265386/3989809/0100	Ciconia ciconia	216
27/07/2005	10:33:00	30/260210/3993792/0020	Milvus migrans	1
27/07/2005	10:39:00	30/260210/3993792/0020	Ciconia ciconia	150
27/07/2005	10:40:00	30/265386/3989809/0100	Circaetus gallicus	3
27/07/2005	10:47:00	30/265386/3989809/0100	Ciconia ciconia	166
27/07/2005	10:48:00	30/254135/3998853/0250	Ciconia ciconia	12
27/07/2005	10:48:00	30/254135/3998853/0250	Ciconia ciconia	50
27/07/2005	10:55:00	30/260210/3993792/0020	Ciconia ciconia	52
27/07/2005	11:04:00	30/265386/3989809/0100	Milvus migrans	8
27/07/2005	11:06:00	30/265386/3989809/0100	Ciconia ciconia	55
27/07/2005	11:11:00	30/260210/3993792/0020	Milvus migrans	1
27/07/2005	11:12:00	30/260210/3993792/0020	Ciconia ciconia	180
27/07/2005	11:15:00	30/254135/3998853/0250	Ciconia ciconia	250
27/07/2005	11:15:00	30/254135/3998853/0250	Ciconia ciconia	500
27/07/2005	11:20:00	30/254135/3998853/0250	Ciconia ciconia	250
27/07/2005	11:22:00	30/260210/3993792/0020	Ciconia ciconia	209
27/07/2005	11:22:00	30/260210/3993792/0020	Ciconia ciconia	400
27/07/2005	11:22:00	30/265386/3989809/0100	Ciconia ciconia	190
27/07/2005	11:22:00	30/265386/3989809/0100	Milvus migrans	9
27/07/2005	11:23:00	30/265386/3989809/0100	Ciconia ciconia	263
27/07/2005	11:38:00	30/265386/3989809/0100	Ciconia ciconia	209
27/07/2005	11:38:00	30/265386/3989809/0100	Ciconia ciconia	400
27/07/2005	11:47:00	30/254135/3998853/0250	Clamator glandarius	1
27/07/2005	12:10:00	30/254135/3998853/0250	Ciconia ciconia	200
27/07/2005	12:10:00	30/260210/3993792/0020	Ciconia ciconia	250
27/07/2005	12:15:00	30/265386/3989809/0100	Falco eleonorae	1
27/07/2005	12:28:00	30/260210/3993792/0020	Circus pygargus	1
27/07/2005	12:50:00	30/254135/3998853/0250	Ciconia ciconia	200
27/07/2005	13:00:00	30/254135/3998853/0250	Ciconia ciconia	150
27/07/2005	13:23:00	30/260210/3993792/0020	Ciconia ciconia	120
27/07/2005	13:29:00	30/265386/3989809/0100	Ciconia ciconia	132
27/07/2005	13:32:00	30/265386/3989809/0100	Ciconia ciconia	1
27/07/2005	13:40:00	30/254135/3998853/0250	Ciconia ciconia	30
27/07/2005	13:45:00	30/254135/3998853/0250	Ciconia ciconia	2
27/07/2005	14:23:00	30/260210/3993792/0020	Milvus migrans	1
27/07/2005	14:30:00	30/254135/3998853/0250	Ciconia ciconia	300
27/07/2005	14:40:00	30/260210/3993792/0020	Ciconia ciconia	200
27/07/2005	14:51:00	30/265386/3989809/0100	Ciconia ciconia	211
27/07/2005	15:09:00	30/260210/3993792/0020	Milvus migrans	2
27/07/2005	15:21:00	30/260210/3993792/0020	Ciconia ciconia	98
27/07/2005	15:38:00	30/265386/3989809/0100	Ciconia ciconia	103
27/07/2005	15:57:00	30/260210/3993792/0020	Circus pygargus	1

28/07/2005	9:07:00	30/254135/3998853/0250	Circaetus gallicus	1
28/07/2005	9:22:00	30/254135/3998853/0250	Circaetus gallicus	6
28/07/2005	9:32:00	30/260210/3993792/0020	Circaetus gallicus	9
28/07/2005	9:32:00	30/260210/3993792/0020	Circus pygargus	1
28/07/2005	9:35:00	30/254135/3998853/0250	Ciconia ciconia	1000
28/07/2005	9:51:00	30/260210/3993792/0020	Ciconia ciconia	1000
28/07/2005	9:52:00	30/254135/3998853/0250	Milvus migrans	11
28/07/2005	9:57:00	30/260210/3993792/0020	Hieraaetus pennatus	1
28/07/2005	10:00:00	30/265386/3989809/0100	Ciconia ciconia	1000
28/07/2005	10:05:00	30/260210/3993792/0020	Milvus migrans	4
28/07/2005	10:10:00	30/265386/3989809/0100	Ciconia ciconia	1
28/07/2005	10:11:00	30/260210/3993792/0020	Milvus migrans	23
28/07/2005	10:12:00	30/254135/3998853/0250	Ciconia ciconia	100
28/07/2005	10:17:00	30/260210/3993792/0020	Milvus migrans	5
28/07/2005	10:24:00	30/260210/3993792/0020	Milvus migrans	11
28/07/2005	10:29:00	30/254135/3998853/0250	Ciconia ciconia	80
28/07/2005	10:29:00	30/254135/3998853/0250	Ciconia ciconia	100
28/07/2005	10:35:00	30/254135/3998853/0250	Ciconia ciconia	100
28/07/2005	10:49:00	30/260210/3993792/0020	Ciconia ciconia	180
28/07/2005	10:50:00	30/260210/3993792/0020	Milvus migrans	23
28/07/2005	10:55:00	30/265386/3989809/0100	Ciconia ciconia	300
28/07/2005	10:55:00	30/265386/3989809/0100	Milvus migrans	30
28/07/2005	10:58:00	30/260210/3993792/0020	Ciconia ciconia	100
28/07/2005	10:58:00	30/260210/3993792/0020	Milvus migrans	15
28/07/2005	10:59:00	30/254135/3998853/0250	Ciconia ciconia	400
28/07/2005	11:05:00	30/260210/3993792/0020	Ciconia ciconia	250
28/07/2005	11:07:00	30/254135/3998853/0250	Ciconia ciconia	25
28/07/2005	11:10:00	30/260210/3993792/0020	Milvus migrans	24
28/07/2005	11:16:00	30/260210/3993792/0020	Ciconia ciconia	400
28/07/2005	11:20:00	30/260210/3993792/0020	Ciconia ciconia	29
28/07/2005	11:20:00	30/265386/3989809/0100	Ciconia ciconia	380
28/07/2005	11:20:00	30/265386/3989809/0100	Milvus migrans	3
28/07/2005	11:34:00	30/254135/3998853/0250	Ciconia ciconia	100
28/07/2005	11:56:00	30/260210/3993792/0020	Ciconia ciconia	115
28/07/2005	12:00:00	30/265386/3989809/0100	Ciconia ciconia	135
28/07/2005	12:10:00	30/254135/3998853/0250	Ciconia ciconia	97
28/07/2005	12:13:00	30/254135/3998853/0250	Ciconia ciconia	27
28/07/2005	12:13:00	30/254135/3998853/0250	Ciconia ciconia	67
28/07/2005	12:23:00	30/254135/3998853/0250	Ciconia ciconia	300
28/07/2005	12:23:00	30/260210/3993792/0020	Ciconia ciconia	80
28/07/2005	12:25:00	30/265386/3989809/0100	Ciconia ciconia	100
28/07/2005	12:30:00	30/265386/3989809/0100	Milvus migrans	21
28/07/2005	12:33:00	30/260210/3993792/0020	Ciconia ciconia	50
28/07/2005	12:49:00	30/254135/3998853/0250	Milvus migrans	11
28/07/2005	12:50:00	30/265386/3989809/0100	Milvus migrans	6
28/07/2005	13:12:00	30/254135/3998853/0250	Milvus migrans	30
28/07/2005	13:12:00	30/260210/3993792/0020	Ciconia ciconia	135
28/07/2005	13:16:00	30/254135/3998853/0250	Ciconia ciconia	17
28/07/2005	13:25:00	30/265386/3989809/0100	Hieraaetus pennatus	1
28/07/2005	13:35:00	30/265386/3989809/0100	Milvus migrans	21

28/07/2005	13:36:00	30/260210/3993792/0020	Ciconia ciconia	20
28/07/2005	13:37:00	30/260210/3993792/0020	Milvus migrans	51
28/07/2005	13:45:00	30/254135/3998853/0250	Ciconia ciconia	400
28/07/2005	13:47:00	30/260210/3993792/0020	Milvus migrans	4
28/07/2005	13:57:00	30/260210/3993792/0020	Ciconia ciconia	7
28/07/2005	14:07:00	30/260210/3993792/0020	Milvus migrans	2
28/07/2005	14:16:00	30/254135/3998853/0250	Milvus migrans	6
28/07/2005	14:22:00	30/254135/3998853/0250	Neophron percnopterus	1
28/07/2005	14:52:00	30/254135/3998853/0250	Ciconia ciconia	-100
28/07/2005	15:00:00	30/260210/3993792/0020	Circus pygargus	1
28/07/2005	15:37:00	30/254135/3998853/0250	Milvus migrans	1
29/07/2005	8:03:00	30/265386/3989809/0100	Ardea cinerea	1
29/07/2005	8:29:00	30/254135/3998853/0250	Milvus migrans	40
29/07/2005	8:50:00	30/254135/3998853/0250	Milvus migrans	12
29/07/2005	8:50:00	30/260210/3993792/0020	Milvus migrans	2
29/07/2005	9:00:00	30/254135/3998853/0250	Ciconia ciconia	125
29/07/2005	9:01:00	30/254135/3998853/0250	Ciconia ciconia	28
29/07/2005	9:05:00	30/254135/3998853/0250	Ciconia ciconia	45
29/07/2005	9:06:00	30/254135/3998853/0250	Milvus migrans	23
29/07/2005	9:25:00	30/254135/3998853/0250	Ciconia ciconia	2
29/07/2005	9:27:00	30/254135/3998853/0250	Ciconia ciconia	16
29/07/2005	9:30:00	30/260210/3993792/0020	Ciconia ciconia	49
29/07/2005	9:34:00	30/265386/3989809/0100	Ciconia ciconia	49
29/07/2005	9:45:00	30/254135/3998853/0250	Ciconia ciconia	24
29/07/2005	9:45:00	30/254135/3998853/0250	Ciconia ciconia	40
29/07/2005	9:45:00	30/254135/3998853/0250	Ciconia ciconia	54
29/07/2005	9:45:00	30/254135/3998853/0250	Ciconia ciconia	100
29/07/2005	9:55:00	30/254135/3998853/0250	Pandion haliaetus	1
29/07/2005	10:02:00	30/254135/3998853/0250	Milvus migrans	20
29/07/2005	10:08:00	30/254135/3998853/0250	Milvus migrans	6
29/07/2005	10:11:00	30/265386/3989809/0100	Ciconia ciconia	255
29/07/2005	10:15:00	30/265386/3989809/0100	Milvus migrans	5
29/07/2005	10:17:00	30/254135/3998853/0250	Ciconia ciconia	450
29/07/2005	10:25:00	30/254135/3998853/0250	Ciconia ciconia	250
29/07/2005	10:35:00	30/254135/3998853/0250	Ciconia ciconia	25
29/07/2005	10:55:00	30/254135/3998853/0250	Ciconia ciconia	70
29/07/2005	10:56:00	30/265386/3989809/0100	Milvus migrans	35
29/07/2005	10:59:00	30/265386/3989809/0100	Ciconia ciconia	300
29/07/2005	10:59:00	30/265386/3989809/0100	Ciconia nigra	1
29/07/2005	12:00:00	30/254135/3998853/0250	Ciconia ciconia	65
29/07/2005	12:00:00	30/254135/3998853/0250	Ciconia ciconia	200
29/07/2005	12:29:00	30/265386/3989809/0100	Milvus migrans	48
29/07/2005	12:40:00	30/254135/3998853/0250	Milvus migrans	250
29/07/2005	12:49:00	30/254135/3998853/0250	Ciconia ciconia	160
29/07/2005	13:01:00	30/265386/3989809/0100	Ciconia ciconia	300
29/07/2005	13:30:00	30/265386/3989809/0100	Buteo rufinus	1
29/07/2005	13:48:00	30/265386/3989809/0100	Ciconia ciconia	100
29/07/2005	14:32:00	30/265386/3989809/0100	Ciconia ciconia	100
29/07/2005	14:58:00	30/265386/3989809/0100	Ciconia ciconia	110

29/07/2005	15:10:00	30/254135/3998853/0250	Ciconia ciconia	320
29/07/2005	15:10:00	30/265386/3989809/0100	Ciconia ciconia	100
29/07/2005	15:14:00	30/265386/3989809/0100	Ciconia ciconia	300
29/07/2005	15:16:00	30/254135/3998853/0250	Ciconia ciconia	900
29/07/2005	15:20:00	30/254135/3998853/0250	Ciconia ciconia	50
29/07/2005	15:20:00	30/254135/3998853/0250	Ciconia ciconia	200
29/07/2005	15:26:00	30/265386/3989809/0100	Ciconia ciconia	900
30/07/2005	8:05:00	30/260210/3993792/0020	Milvus migrans	3
30/07/2005	8:45:00	30/254135/3998853/0250	Ciconia ciconia	300
30/07/2005	8:51:00	30/254135/3998853/0250	Milvus migrans	36
30/07/2005	8:53:00	30/254135/3998853/0250	Ciconia ciconia	100
30/07/2005	8:54:00	30/254135/3998853/0250	Ciconia ciconia	19
30/07/2005	8:58:00	30/260210/3993792/0020	Riparia riparia	25
30/07/2005	9:07:00	30/260210/3993792/0020	Riparia riparia	9
30/07/2005	9:09:00	30/260210/3993792/0020	Ciconia ciconia	400
30/07/2005	9:11:00	30/254135/3998853/0250	Ciconia ciconia	200
30/07/2005	9:14:00	30/254135/3998853/0250	Ciconia ciconia	1143
30/07/2005	9:24:00	30/254135/3998853/0250	Ciconia ciconia	43
30/07/2005	9:24:00	30/260210/3993792/0020	Ciconia ciconia	14
30/07/2005	9:26:00	30/254135/3998853/0250	Ciconia ciconia	11
30/07/2005	9:27:00	30/260210/3993792/0020	Falco eleonorae	1
30/07/2005	9:30:00	30/260210/3993792/0020	Ciconia ciconia	480
30/07/2005	9:30:00	30/260210/3993792/0020	Milvus migrans	22
30/07/2005	9:31:00	30/254135/3998853/0250	Ciconia ciconia	11
30/07/2005	9:36:00	30/260210/3993792/0020	Ciconia ciconia	120
30/07/2005	9:40:00	30/260210/3993792/0020	Ciconia ciconia	66
30/07/2005	9:45:00	30/260210/3993792/0020	Ciconia ciconia	17
30/07/2005	9:55:00	30/260210/3993792/0020	Ciconia ciconia	5
30/07/2005	9:58:00	30/254135/3998853/0250	Ciconia ciconia	207
30/07/2005	10:02:00	30/260210/3993792/0020	Haematopus ostralegus	1
30/07/2005	10:05:00	30/260210/3993792/0020	Ciconia ciconia	200
30/07/2005	10:07:00	30/254135/3998853/0250	Ciconia ciconia	42
30/07/2005	10:10:00	30/260210/3993792/0020	Ciconia ciconia	207
30/07/2005	10:15:00	30/254135/3998853/0250	Circaetus gallicus	1
30/07/2005	10:21:00	30/254135/3998853/0250	Ciconia ciconia	300
30/07/2005	10:27:00	30/254135/3998853/0250	Ciconia ciconia	100
30/07/2005	10:27:00	30/260210/3993792/0020	Apus caffer	1
30/07/2005	10:30:00	30/254135/3998853/0250	Ciconia ciconia	39
30/07/2005	10:30:00	30/254135/3998853/0250	Milvus migrans	35
30/07/2005	10:30:00	30/260210/3993792/0020	Ciconia ciconia	200
30/07/2005	10:33:00	30/254135/3998853/0250	Falco eleonorae	1
30/07/2005	10:45:00	30/260210/3993792/0020	Ciconia ciconia	3
30/07/2005	10:45:00	30/260210/3993792/0020	Ciconia ciconia	120
30/07/2005	10:45:00	30/260210/3993792/0020	Milvus migrans	26
30/07/2005	10:50:00	30/260210/3993792/0020	Ciconia ciconia	200
30/07/2005	10:50:00	30/260210/3993792/0020	Milvus migrans	36
30/07/2005	11:20:00	30/260210/3993792/0020	Ciconia ciconia	300

30/07/2005	12:39:00	30/254135/3998853/0250	Circus pygargus	1
30/07/2005	12:40:00	30/260210/3993792/0020	Ciconia ciconia	192
30/07/2005	12:45:00	30/260210/3993792/0020	Ciconia ciconia	200
30/07/2005	13:30:00	30/254135/3998853/0250	Ciconia ciconia	100
30/07/2005	13:30:00	30/254135/3998853/0250	Milvus migrans	18
30/07/2005	15:10:00	30/260210/3993792/0020	Ciconia ciconia	300
30/07/2005	15:15:00	30/260210/3993792/0020	Ciconia ciconia	93
31/07/2005	8:50:00	30/254135/3998853/0250	Milvus migrans	9
31/07/2005	9:17:00	30/260210/3993792/0020	Milvus migrans	10
31/07/2005	9:17:00	30/260210/3993792/0020	Neophron percnopterus	1
31/07/2005	9:23:00	30/254135/3998853/0250	Milvus migrans	5
31/07/2005	9:26:00	30/260210/3993792/0020	Milvus migrans	3
31/07/2005	9:45:00	30/254135/3998853/0250	Ciconia ciconia	45
31/07/2005	9:45:00	30/254135/3998853/0250	Milvus migrans	30
31/07/2005	9:52:00	30/260210/3993792/0020	Ciconia ciconia	45
31/07/2005	10:08:00	30/254135/3998853/0250	Ciconia ciconia	260
31/07/2005	10:10:00	30/254135/3998853/0250	Milvus migrans	14

Suma de individuos y cantidad de observaciones por especies observadas en el período. Se ordenan las especies taxonómicamente.

Especie:	SumaDeIndividuosObservados:	CantidadDeObservaciones:
Ardea cinerea	1	1
Ciconia nigra	1	1
Ciconia ciconia	97091	402
Elanus caeruleus	1	1
Milvus migrans	3144	155
Neophron percnopterus	8	7
Gyps rueppellii	1	1
Circaetus gallicus	54	24
Circus aeruginosus	1	1
circus pygargus	25	23
Buteo buteo	3	1
Buteo rufinus	1	1
Hieraaetus pennatus	21	15
Hieraaetus fasciatus	2	2
Pandion haliaetus	2	2
Falco tinnunculus	1	1
Falco eleonora	3	3
Falco peregrinus	1	1
Haematopus ostralegus	1	1
Psittacula krameri	1	1
Clamator glandarius	1	1
Apus caffer	1	1

Merops apiaster	29	3
Riparia riparia	34	2

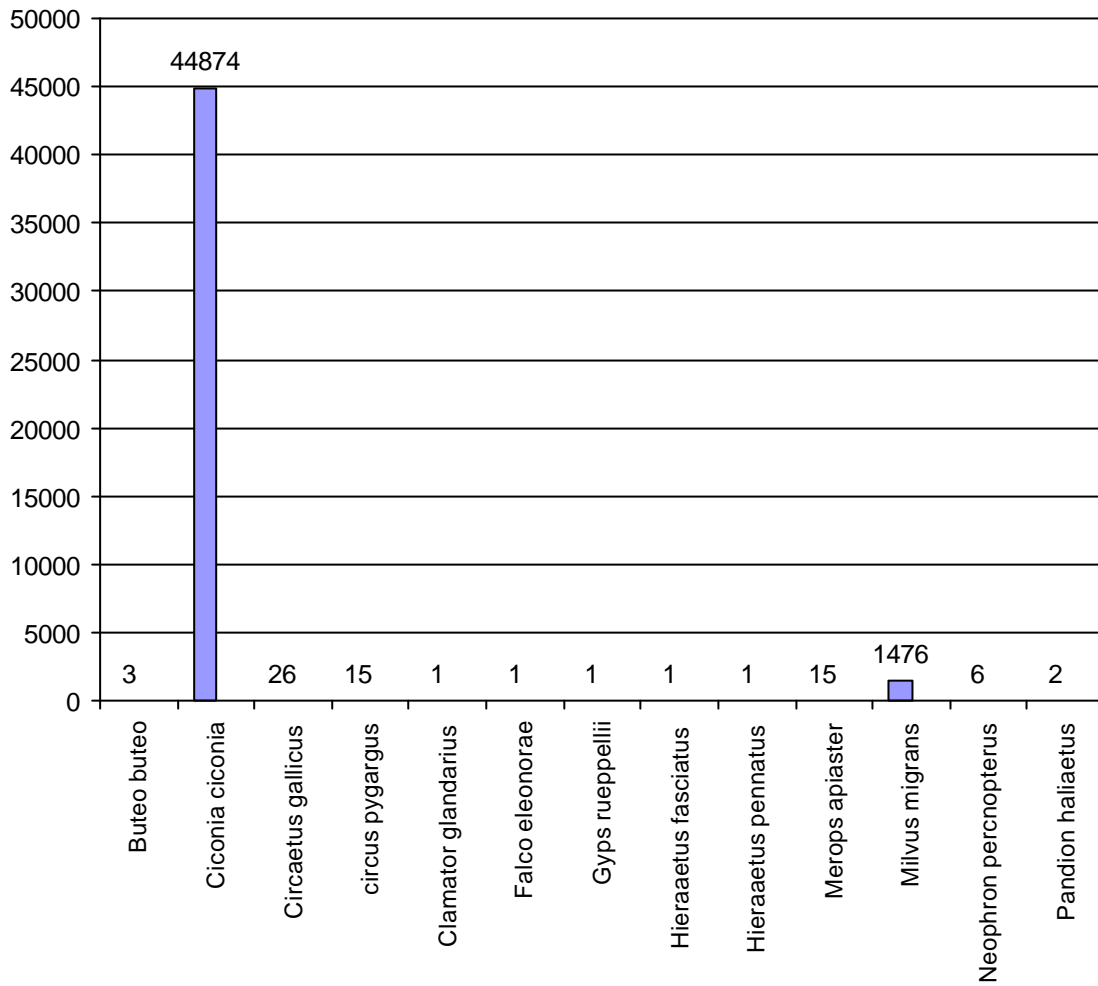
CantidadDeEspecies:	TotalDeAvesObservadas
----------------------------	------------------------------

24

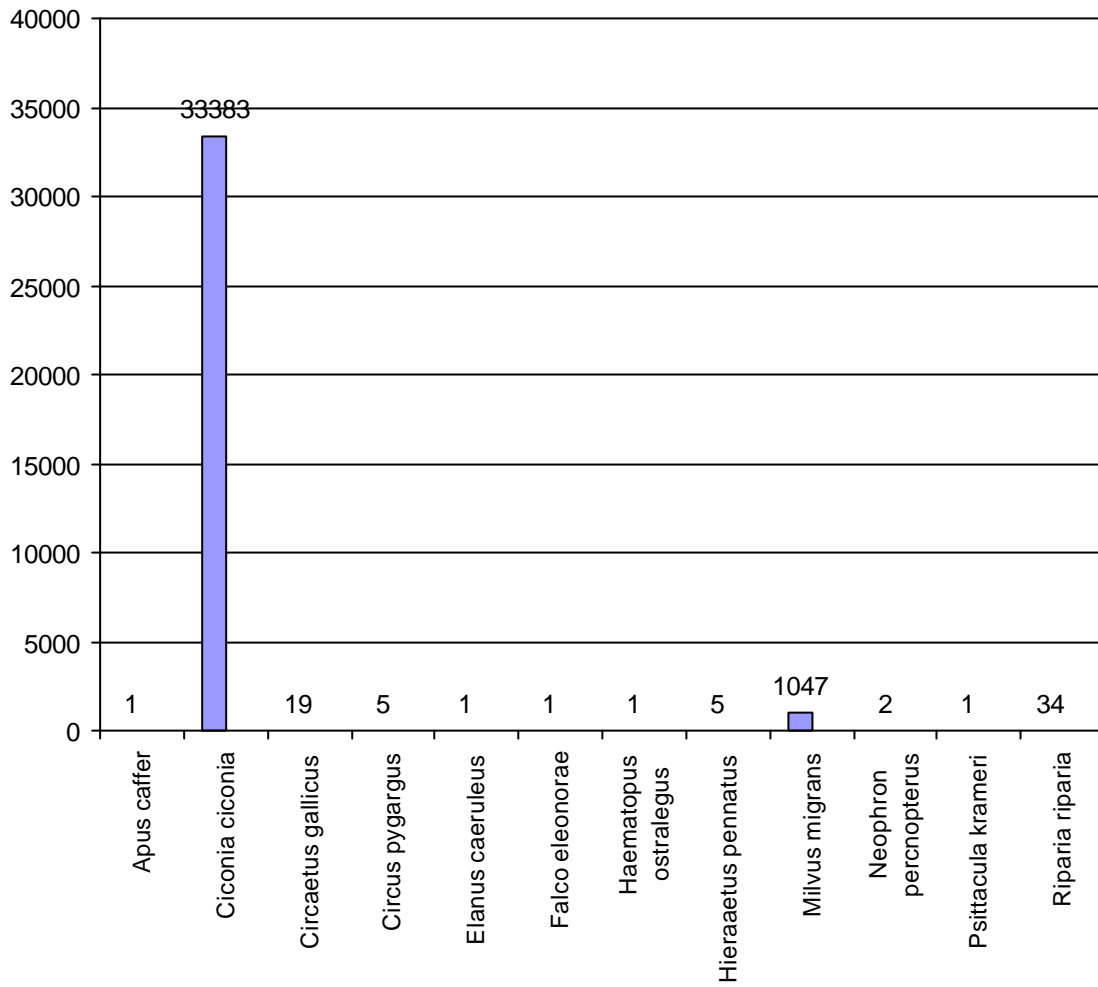
100428

Gráfica de especies y cantidad de aves ordenadas en las cuadrículas UTM de 1 x 1 Km. en las que fueron observadas.

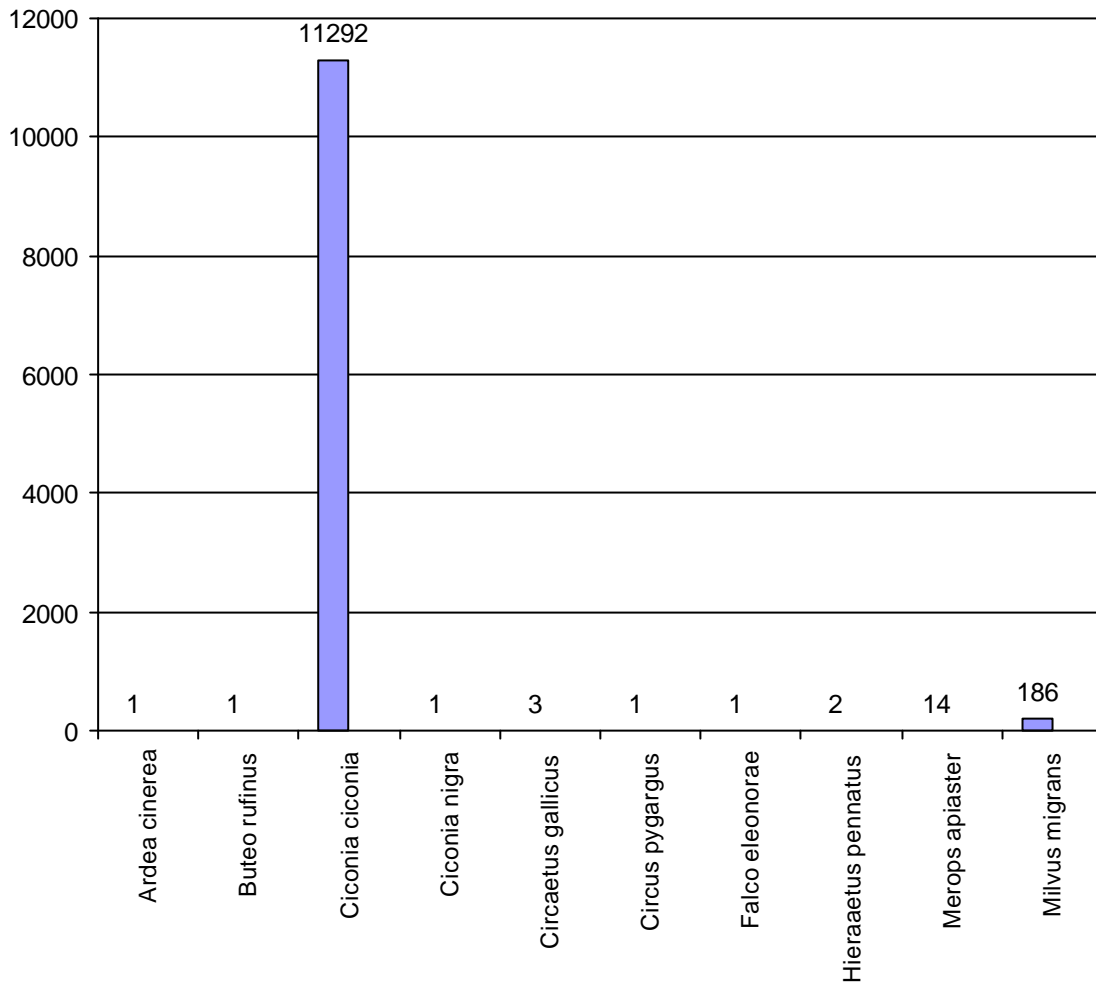
UTM-1x1Km: 30/254/3998



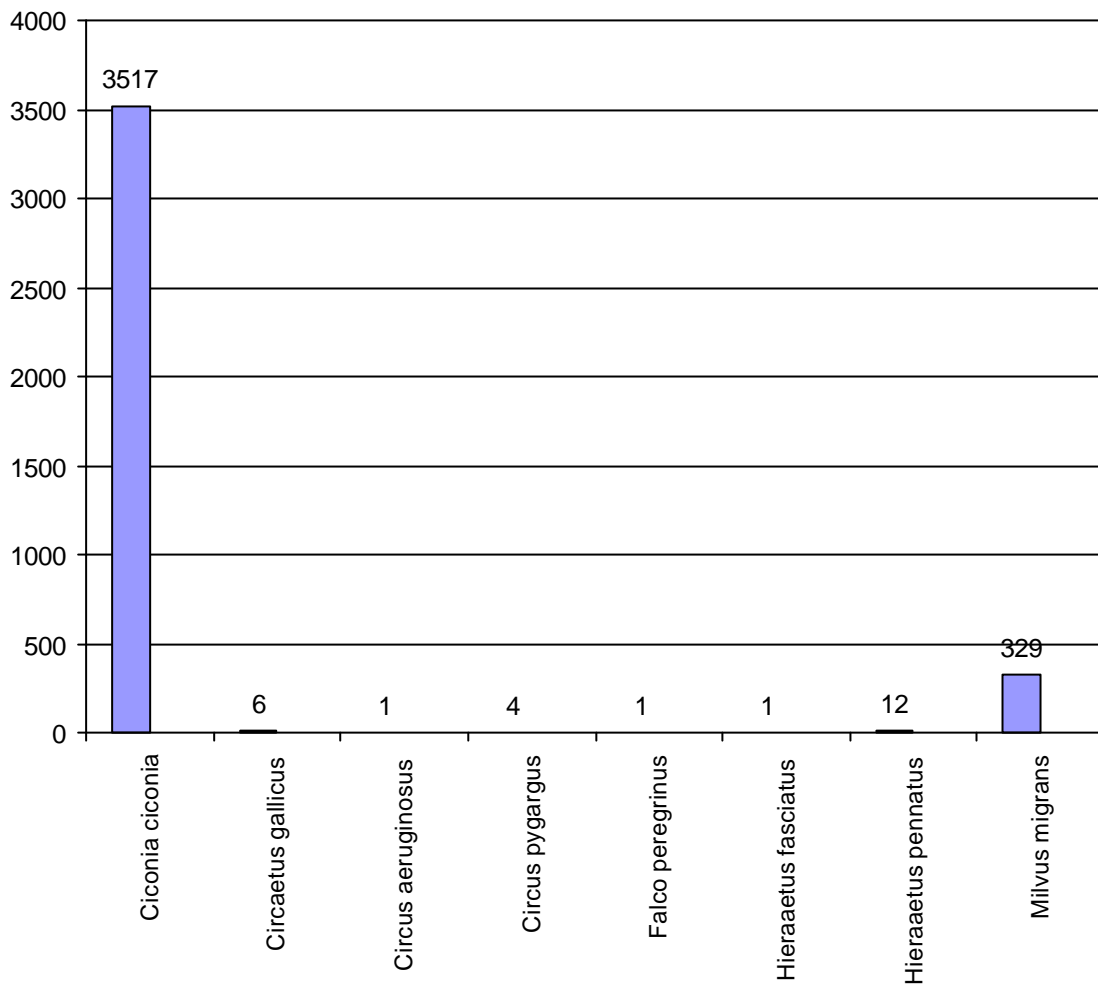
UTM-1x1Km: 30/260/3993



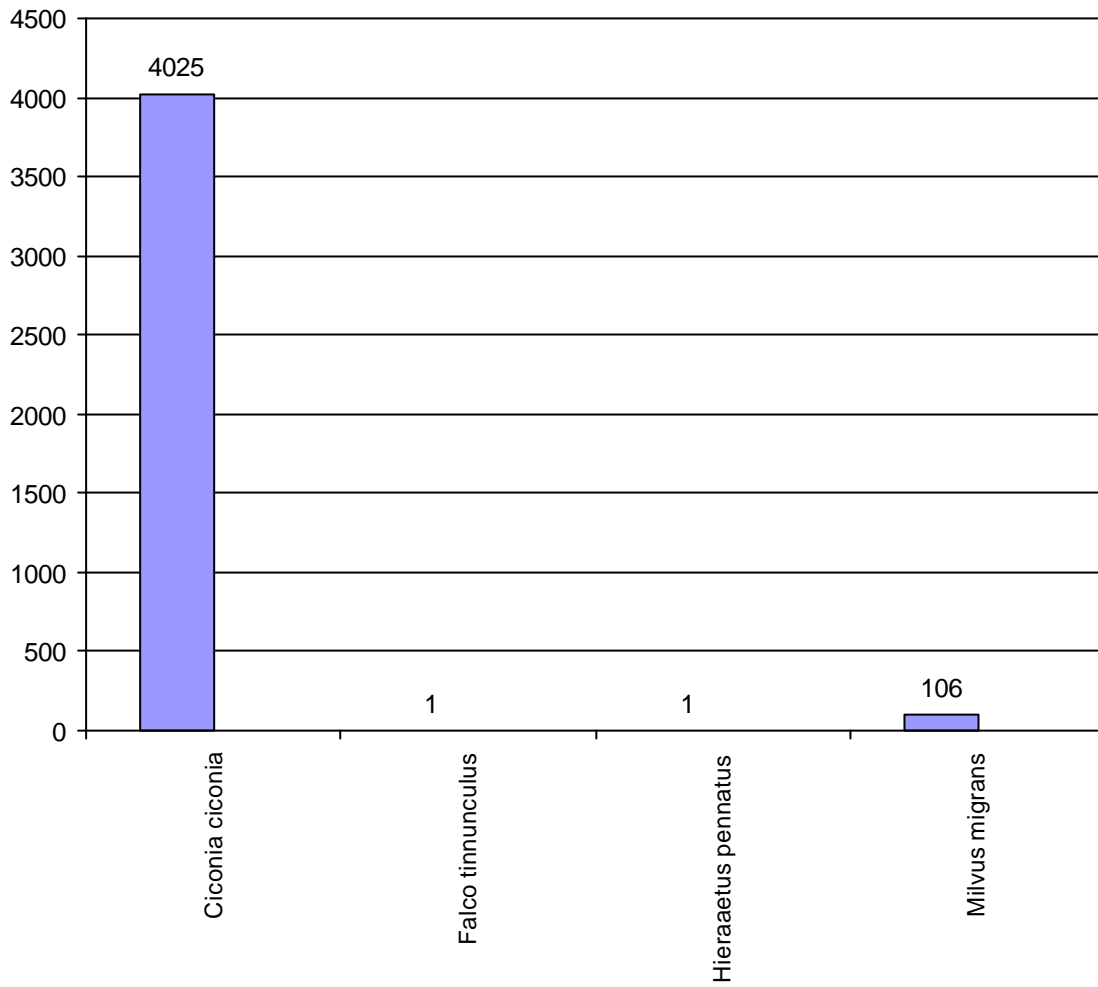
UTM-1x1Km: 30/265/3989



UTM-1x1Km: 30/266/3989



UTM-1x1Km: 30/270/3993



Colectivo Ornitológico Cigüeña Negra

El Colectivo Ornitológico Cigüeña Negra (COCN.) es una asociación de voluntariado sin ánimo de lucro incluida con fecha 27 de Septiembre 1.997 en el Registro Especial de Asociaciones de la Delegación Provincial de la Consejería de Gobernación en Cádiz con el número 4.822.

Si bien esta es la fecha de legalización de la asociación, sus miembros ya llevábamos tiempo, tanto a nivel individual como de grupo, realizando actividades de cara al estudio y conservación de las aves en la comarca del Campo de Gibraltar. De hecho, actualmente en la base de datos de la Estación Ornitológica de Tarifa se encuentra información aportada por diferentes miembros de la asociación referente a estudios de campo, migraciones de aves planeadoras en el área del Estrecho de Gibraltar sobre todo, realizados desde 1.983.

La asociación tiene como objetivos principales: El estudio, conservación y divulgación de la naturaleza en general y las aves en particular. Estos objetivos se cumplen con los numerosos proyectos, que a nivel de voluntariado realizan los socios y voluntarios del COCN.

Uno de los proyectos principales puestos en marcha por el COCN. es el de la Estación Ornitológica e Tarifa, un centro publico en el área del Estrecho de Gibraltar desde el cual se canalizan otros muchos proyectos de la asociación y otras asociaciones e instituciones.

La importancia del Estrecho de Gibraltar y de los numerosos proyectos que desarrollamos en esta área radica en que por diversas condiciones geográficas, físicas y biológicas una gran cantidad de aves se ven obligadas a realizar sus viajes migratorios por esta zona. De este modo en un pequeño espacio podemos contabilizar un gran número de aves en trasiego entre Europa y África.

Estudiando y analizando estas aves y su comportamiento en esta zona, estamos trabajando de cara a conocer sus poblaciones, lo cual es muy importante para estimar si dichas especies aumentan o disminuyen en número en el tiempo, esto no solo nos sirve para conocer y tratar de conservar la biodiversidad, también utilizando a las aves como bioindicadoras, desde una zona como es la del Estrecho de Gibraltar, se puede llegar a conocer el estado ambiental de los hábitats de estas aves.

Desde el Estrecho de Gibraltar, y en eso trabajamos, estamos tratando de determinar el estado de salud ambiental de los continentes europeo y africano, que son una buena porción del planeta Tierra.

Se están realizando actualmente un total de 11 estudios ornitológicos en esta zona, muchos de ellos iniciales, los cuales servirán de base de comparación para estudios futuros. Se ha creado una base de datos de uso publico, la cual puede y es consultada por numerosos investigadores. Se esta formando a los voluntarios de mediante cursos, ponencias, exposiciones, etc. y se esta tratando de hacer ver a la población local el importante recurso de que disponen.

Pero el COCN. todavía realiza mucho más: La asociación esta trabajando en el estudio de diferentes especies en peligro de extinción como son el Torillo y los Aguiluchos cenizos en la provincia de Cádiz. En el estudio de diversos espacios naturales y en programas de formación y educación ambiental.

La gran cantidad de información que desde el COCN. se esta generado, tanto a nivel local, como nacional e internacional con relación a los movimientos migratorios de las aves en el Estrecho de Gibraltar, y la importancia que esto tiene, cada vez atrae a más voluntarios, científicos y ornitólogos de todo el mundo hasta esta zona. Por ello desde el COCN. y ante la carencia de puntos de información se iniciaron proyectos como el del Teléfono de Información Ornitológica en el Estrecho de Gibraltar, la apertura de un punto de información en la Estación Ornitológica de Tarifa, etc.

Todas las actividades de la asociación son realizadas por voluntarios, lo cual no merma ni la fiabilidad de los resultados obtenidos, ni la calidad de los trabajos realizados. En estudios y trabajos de campo el 95 % de los más de 1.000 voluntarios que hasta la fecha han participado en los proyectos del COCN. eran profesionales o estudiantes de carreras relacionadas con el estudio y conservación de la naturaleza. Profesionales técnicos, aportando ideas y soluciones en proyectos como el de la creación de la base de datos, planificación y diseño de observatorios para aves en el Estrecho de Gibraltar ...

La asociación ha crecido en muy pocos años a pasos agigantados a nivel de socios, colaboradores y voluntarios. Pero sobre todo es cada vez mayor el apoyo tanto publico como privado a las propuestas de cara a la conservación, estudio y divulgación de la naturaleza que realizamos.

Hacerse Socio

Para colaborar o hacerte socio del Colectivo Ornitológico Cigüeña Negra, solo tienes que imprimir, rellenar este cupón y enviarlo en sobre cerrado a:

Colectivo Ornitológico Cigüeña Negra

Estación Ornitológica de Tarifa

Crt. N 340 Km 78,5

11380 Tarifa

Tlf 639.859.350

Nombre _____

Apellidos _____

DNI _____

Dirección _____

Población _____ CP _____ Provincia _____

Teléfono _____ e-mail _____

Fecha de nacimiento ____/____/____

Actividades que podría desarrollar _____

Deseo hacerme socio colaborando con la cantidad anual de: _____ E.

(Mínimo 20 E Si el solicitante tuviese algún problema de tipo económico puede exponerse mediante escrito con el objeto de solicitar ayuda al COCN para ser socio.)

Nombre del Banco/Caja _____

Código de entidad _____ Oficina _____ DC _____

Numero de cuenta _____

Nombre del titular de la cuenta (Si no es el mismo que el socio)

Firma del titular

Fecha

_____/_____/_____